

INTRO BRASS CHORALE, SLOW TEMPO

7

9 **A** NEW TEMPO, FAST

13

17 SWING!!!

ETC...

21

25 **B**

31

36

41 **C** OPEN SOLOS

45

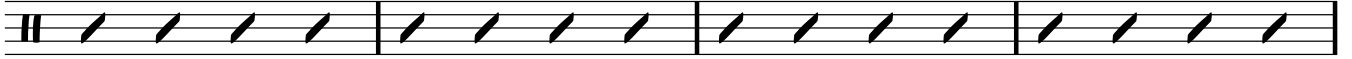
49



53



57 **D**



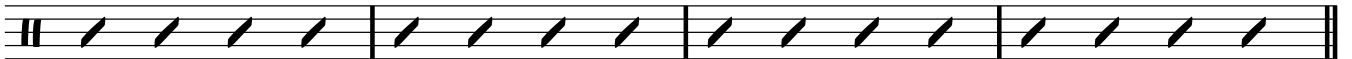
61



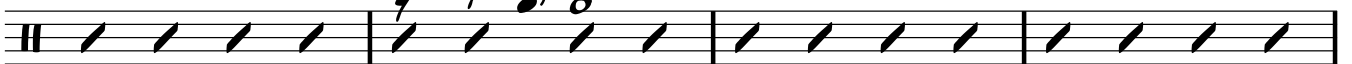
65



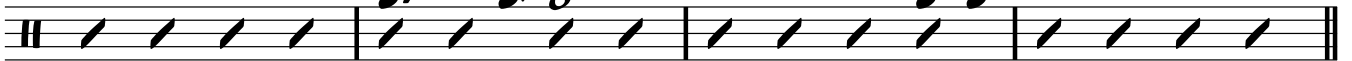
69



73 **E**



77



81 **F**



85



89 SOLO AROUND KICKS

*mf/mp*

93

97 **Q** END SOLO

102 SOLO FILL

COND.....

MOLTO RIT.